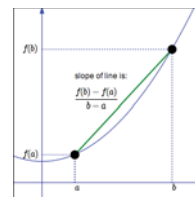


Average vs. Instantaneous Rates of Change: Discovering the Derivative
 AP Readiness - Mr. Lange, Hollywood High School

Average Rate of Change is the slope of the secant line between two points.

$$A.R.C. = \frac{\text{change in } f(x)}{\text{change in } x} = \frac{f(x) - f(a)}{x - a}$$

$$\frac{y_2 - y_1}{x_2 - x_1} = \frac{f(b) - f(a)}{b - a}$$

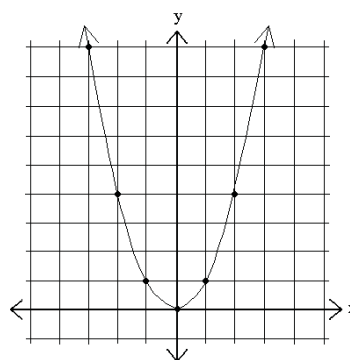


$$\text{Average Velocity} = \frac{\text{Change in position (displacement)}}{\text{Change in time}} = \frac{\Delta x}{\Delta t} = \frac{x_2 - x_1}{t_2 - t_1}$$

$$\text{Average Acceleration} = \frac{\text{Change in velocity}}{\text{Change in time}} = \frac{\Delta v}{\Delta t} = \frac{v_2 - v_1}{t_2 - t_1}$$

1. $f(x) = x^2$ Find the average rate of change on the following intervals:

[-2,2]	[1.99,2]
[0,2]	[2,3]
[1,2]	[2,2.5]
[1.5,2]	[2,2.1]
[1.9,2]	[2,2.01]
What do you notice as Δx gets smaller?	



x	-3	-2	-1	0	1	2	3
y	9	4	1	0	1	4	9

What is the rate of change of $f(x)$ at $x=2$?

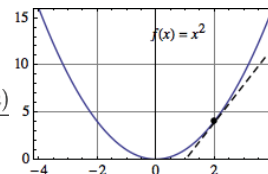
Instantaneous rate of change is the **slope of the tangent line** at a particular point, which happens to be the value of the derivative at that point. It is the limit of the average rate of change as Δx or h approaches zero or as x approaches a , depending on your definition.

$$f'(x) = \lim_{h \rightarrow 0} \frac{f(x+h) - f(x)}{h}$$

$$\text{Average rate of change} = \frac{f(a+h) - f(a)}{h}$$

$$f'(a) = \lim_{x \rightarrow a} \frac{f(x) - f(a)}{x - a}$$

$$\text{Instantaneous rate of change} = \lim_{h \rightarrow 0} \frac{f(a+h) - f(a)}{h}$$

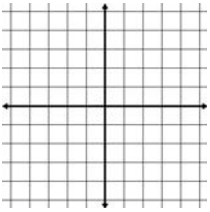
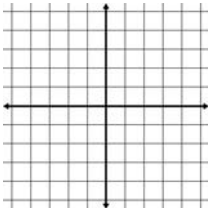
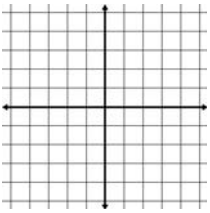
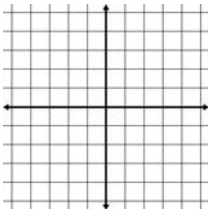
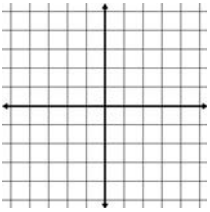
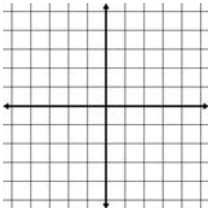
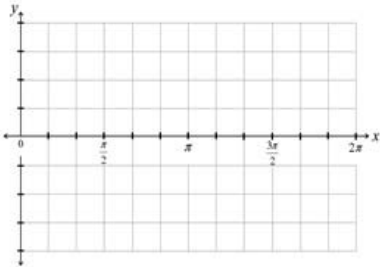


Let's verify the instantaneous rate of change (the derivative) of $f(x) = x^2$ at $x=2$

Average vs. Instantaneous Rates of Change: Discovering the Derivative
 AP Readiness - Mr. Lange, Hollywood High School

Let's look at some of the graphs in our family of functions in the context of rate of change and determine the derivatives.

Remember the limit definition of the derivative is $f'(x) = \lim_{h \rightarrow 0} \frac{f(x+h) - f(x)}{h}$.

$f(x)=c$		$f(x)=x$	
$f(x)=x^2$		$f(x)=x^3$	
$f(x)=\sqrt{x}$		$f(x)= x $	
$f(x)=\sin(x)$			

Great Calculus Resources			
Google	Desmos.com	mrlangemath.com	wolframalpha.com
Ms. Roshan's Screencasts- for Stewart	"Geogebra Calculus Applets"	"Calculus Maximus"	mastermathmentor.com
Find a graphing calculator for your phone	Youtube: PatrickJMT	The AP Calculus Problem Book	Download Calculus Apps for your phone/tablets
Wikipedia	KhanAcademy	Coursera	Symbolab